

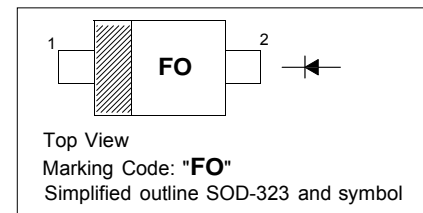
## SMALL SIGNAL SCHOTTKY DIODE

### Features

- Low turn-on voltage low capacitance
- Ultrafast switching
- Ideal for single or double, UHF balanced mixer, modulators and phase detectors

### PINNING

PIN	DESCRIPTION
1	Cathode
2	Anode



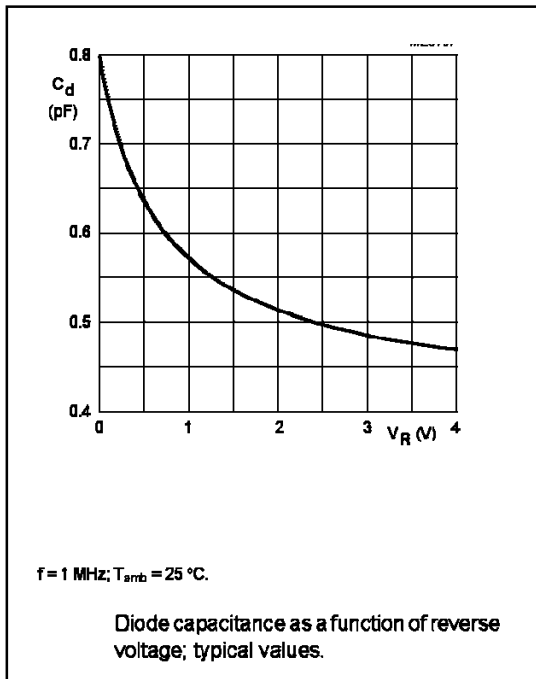
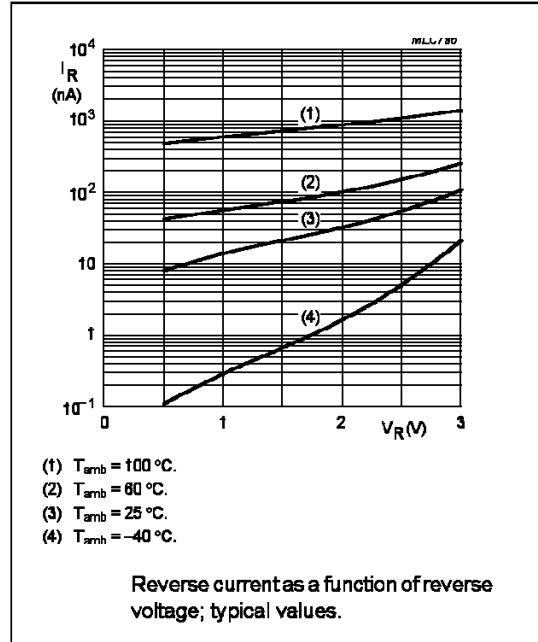
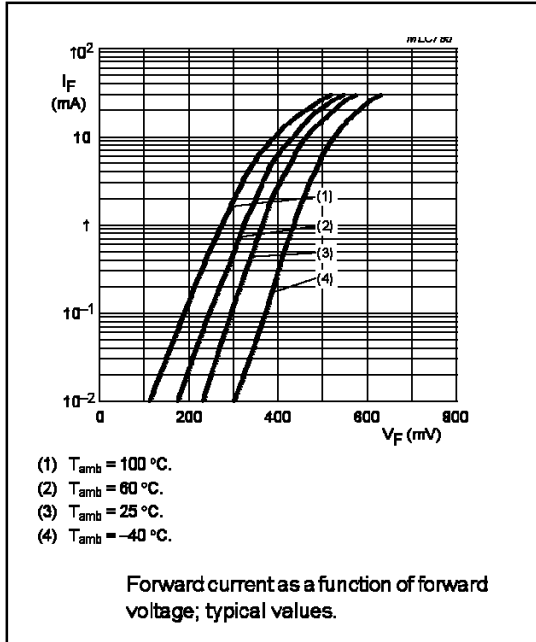
### Absolute Maximum Ratings ( $T_a = 25\text{ }^\circ\text{C}$ )

Parameter	Symbol	Value	Unit
Reverse Voltage	$V_R$	4	V
Forward Current	$I_F$	30	mA
Power Dissipation	$P_{tot}$	150	mW
Thermal resistance junction to ambient air <sup>1)</sup>	$R_{\theta JA}$	500	$^\circ\text{C/W}$
Junction Temperature	$T_J$	125	$^\circ\text{C}$
Storage Temperature	$T_{stg}$	- 65 to + 150	$^\circ\text{C}$

<sup>1)</sup> Valid provided that electrodes are kept at ambient temperature.

### Characteristics $T_a = 25\text{ }^\circ\text{C}$

Parameter	Symbol	Min.	Max.	Unit
Reverse Breakdown Voltage at $I_R = 10\text{ }\mu\text{A}$	$V_{(BR)R}$	4	-	V
Maximum Forward Voltage at $I_F = 10\text{ mA}$	$V_F$	-	600	mV
Reverse Leakage Current at $V_R = 3\text{ V}$ at $V_R = 3\text{ V}, T_a = 60\text{ }^\circ\text{C}$	$I_R$	- -	0.25 1.25	$\mu\text{A}$
Diode Capacitance at $V_R = 0\text{ V}, f = 1\text{ MHz}$	$C_D$	-	1	pF





**CHINA BASE**  
INTERNATIONAL

**SOD-323**

**BAT17WS**

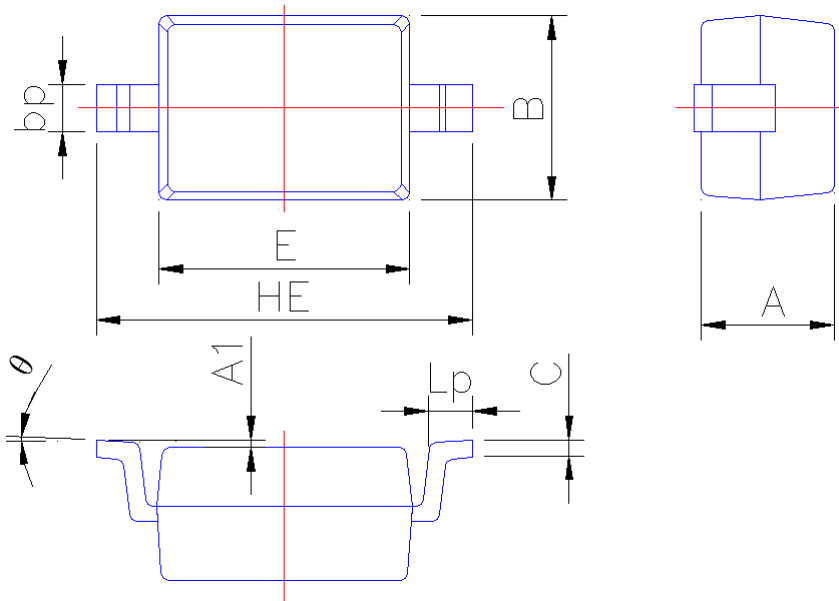


www.china-base.com.hk

**PACKAGE OUTLINE**

Plastic surface mounted package; 2 leads

SOD-323



Symbol	Dimension in Millimeters	
	Min	Max
A	0.95	1.15
A1	0.010	0.100
B	1.20	1.40
bp	0.25	0.40
C	0.09	0.150
E	1.60	1.80
HE	2.30	2.70
Lp	0.20	0.40
θ	0°	5°